

QUALITY FIRST

Humboldt
Seed Organization

Retail

◆ Catalogue ◆

2023



WITH LOVE FROM CALIFORNIA

OPEN
for **BUSINESS**



Roots in Humboldt, Branches in Europe

Humboldt Seed Organization has been a pioneer in the global cannabis market since 2009 with more than 20 years of hands-on experience. In the early 2000's HSO sprouted from humble beginnings in Humboldt County, California and has now emerged as a premier cannabis breeder supporting a broad global network with partners in North and South America, Europe and Southeast Asia. Driven by innovation and customer satisfaction, we breed our genetics with cutting edge science and lab technology to assist in selecting only the most elite plant profiles.

We hope you enjoy this selection of our finest cannabis varieties.

With love from California,
— Team HSO



Contents

Autoflower Seed	2
Chem Bomb Auto	3
Chocolate Mint OG Auto	3
Mango OG Auto	4
OG Kush Auto	4
OGKZ Auto	5
Pineapple Chem Auto	5
Feminized Seed	6
Banana Sapphire	7
Blueberry Headband	8
Chocolate Mint OG 2.0	9
Cinnamon Buddha OG	10
Florida Gaspak	11
Ghost of NYC	12
Green Crack 2.0	13
Lemon Citron	14
Sapphire OG	15
Fast Flowering Seed	16
Ice Cream Cake	17
Peanut Butter Breath	17
Runtz	18
White Runtz	18
CBD Seed	20
Amnesia CBD Pure Auto	20
Sapphire Bubba CBD Pure	21
Sapphire Lime CBD	21
About HSO / Expos	Back Cover

VISIT US ONLINE:
humboldtseeds.org



AUTOFLOWERING SEEDS

Meticulous research and hard work has resulted in the transformation of some of California's most premier genetics bred into automatic flowering form. Highly resistant with a wide range of sizes, statures, smells, tastes and effects, these strains have been created to suit all skill levels. Ranging 70 to 85 days from seed to finish, nothing like these have existed until now.

Many years of breeding and selection have given rise to these most unique and influential autoflowering strains found in the world today. From production value, to disease and pest resistance and most of all, flavor and effect, we are excited to present the next generation of superior quality genetics found only at the Humboldt Seed Organization.

GROWING AUTOFLOWERS

- Drier conditions are recommended for the entire life cycle of the plant to maximize overall performance. The biggest mistake WATERING TOO MUCH. It's best to give them small amounts of water in regular and somewhat frequent intervals.
- The primary weeks of development need small amounts of water, stronger doses of nutrition, plenty of sunlight or artificial light and a highly aerated median or soil.
- Seed starts should be planted directly into their final container (no transplanting necessary). Autoflowering plants will typically grow for the first 21 to 30 days then rapidly develop into the flowering period. Feeding schedules should be adjusted accordingly.
- Outdoors, ideal planting schedules are 3 to 5 weeks before the summer solstice allowing plants to grow with the sun into the peak of the season. This will utilize the remaining weeks after the solstice period, maximizing oil production due to the sun's higher UV output.
- Indoors, to optimize production autoflowering plants should receive 18-22 hours of light the entire cycle. Pot size will determine the overall production, though plants perform remarkably well in small containers.



70% Indica / 20% Ruderalis / 10% Sativa
18-21%+ THC

Indoor Days: 75-78 days
Indoor Yield: 25-80g+ plant, 450g-500g m²
Outdoor Days: 78-90 days
Outdoor Yield: 25-200g+ per plant
Outdoor Height: up to 1m / 3ft

Chem Bomb Auto

This 5th generation selection evolved from our initial Chem '91 X our elite un-circulated Bubba Kush auto. Unique genetics originate from our exclusive privately-held breeding stock. High yields and amazing bag appeal raise the bar for autoflowers. An absolute must for collectors.

Flavor and Effects

Tropical floral aromas develop in later stages. The Indica dominant genotype makes for strong body sensations followed by a long relaxing finish. Great for end of day use.

3 pack
...
€33.50

5 pack
.....
€52.50

10 pack
.....
€95.00



70% Indica / 20% Ruderalis / 10% Sativa
18-21%+ THC, 0.1% CBD

Indoor Days: 75-78 days
Indoor Yield: 25-80g+ plant, 450g-500g m²
Outdoor Days: 78-90 days
Outdoor Yield: 25-200g+ per plant
Outdoor Height: 1-1.5m / 3-4ft

Chocolate Mint OG Auto

Created from some of our most prized genetics, the Chocolate Mint OG and OG Kush auto, this is the strain connoisseurs have been waiting for. This exquisite variety is known for its sticky resin and unique terpene profile. Diversify your collection with this resinous gem.

Flavor and Effects

Sharp Gassy and acrid aromas are supported by earthy, pine and chocolate undertones. Mild mint and menthol accents.

3 pack
...
€33.50

5 pack
.....
€52.50

10 pack
.....
€95.00



Mango OG Auto

The autoflower evolution continues as the pursuit of loud and dominant terpene profiles are now the driving force behind the movement. The mango OG auto packs high intensity flavor while also loading on the weight. For those seeking great results, look no further: Mango OG Auto combines commercial production appeal with premium bag appeal.

Flavor and Effects

Spicy mango with sharp pine and black pepper overtones, complemented by sweet tropical fruit and deep floral notes. Relaxing cerebral sensations followed by long lasting, yet mild body high. Great for daytime use and outdoor activities. Works well for anxiety.

45% Indica / 30% Ruderalis / 25% Sativa
18-21%+ THC, 0.1% CBD

Indoor Days: 78+ days

Indoor Yield: 25-80g+ plant, 450g-500g m²

Outdoor Days: 78-90+ days

Outdoor Yield: 25-200g+ per plant

Outdoor Height: 1m-2m / 3-6ft

3 pack

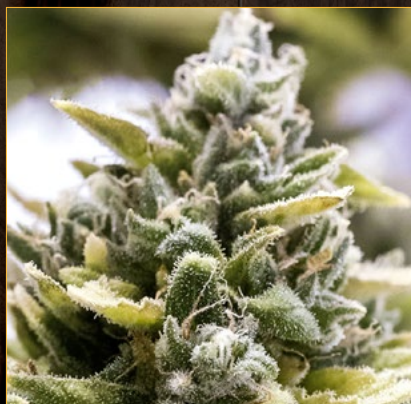
...
€33.50

5 pack

.....
€52.50

10 pack

.....
€95.00



OG Kush Auto

Leading the industry for a decade in autoflower development, HSO's flagship project was the OG Kush. With unbelievably dank terpene expressions, it seemed only fitting to start here. Six years in, HSO continues to develop this line and improve upon this innovative gem. OG Kush Auto is a true masterpiece to be experienced.

Flavor and Effects

Defined notes of gassy lemon cleaner, diesel fuel with pine and lemongrass. Sharp acrid tones of pine and menthol undertones. Effects are indica dominant with strong body sensations that last for hours. Great for end of day use as well as pain relief. Beneficial sleep aid.

60% Indica / 30% Ruderalis / 10% Sativa
18-21%+ THC, 0.1% CBD

Indoor Days: 78 days

Indoor Yield: 25-80g+ plant, 450g-500g m²

Outdoor Days: 78-90 days

Outdoor Yield: 25-80g+ per plant

Outdoor Height: up to 2m / 6ft

3 pack

...
€33.50

5 pack

.....
€52.50

10 pack

.....
€95.00



OGKZ Auto

Created from one of the most highly demanded strains in HSO's catalog, meet the new OGKZ Auto. This evolutionary hybrid is changing the autoflower game. OGKZ's exceptional quality represents a leap forward, and reflects the tireless selection and work put into creating next-gen genetics. This resinous beauty is a MUST HAVE addition to any seed library.

Flavor and Effects

Sweet and sour candy essence with hints of spicy peppermint and sharp forest pine followed by a gassy finish. Strong effects and long lasting body high. Great for end of day use and relaxation. Works well with anxiety. Mellow and calming.

70% Indica / 20% Ruderalis / 10% Sativa
16-18%+ THC, 0.1% CBD

Indoor Days: 78-83 days

Indoor Yield: 25-90g+ plant

Outdoor Days: 78-90+ days

Outdoor Yield: 45-120g+ per plant

Outdoor Height: 0.75m-1.25m+ / 2.5-4ft+

3 pack

...
€33.50

5 pack

.....
€52.50

10 pack

.....
€95.00



Pineapple Chem Auto

An incredible explosion of tropical fruit and sweet floral aromas dominate this high-yielding AAA auto-flower. Pineapple Chem Auto is an exquisite combination of our Green Crack auto and Chem Bomb autoflower male, resulting in a robust and vigorous plant supported by strong lateral branching built for heavy yields.

Flavor and Effects

Loud and vibrant notes of mango pineapple and berries followed by complex gassy and floral undertones finishing with sweet pine and mild citrus aromas. Mild cerebral high with long lasting body sensations. Great for relaxation and light outdoor activities. Great for minor pain and anxiety relief.

70% Indica / 20% Ruderalis / 10% Sativa
18-21% THC, 0.1% CBD

Indoor Days: 78 days

Indoor Yield: 25-80g+ plant, 450g-500g m²

Outdoor Days: 78+ days

Outdoor Yield: 25-200g+ per plant

Outdoor Height: 0.75m-1.25m / 2.5-4ft

3 pack

...
€33.50

5 pack

.....
€52.50

10 pack

.....
€95.00



FEMINIZED SEEDS

These feminized cannabis seeds are the bread and butter of our collection. Tried and true, these strains feature high-quality, heavy-yielding and amazingly potent “made in the USA” genetics. This catalogue includes a selection of Californian strains regarded by many as the elite of cannabis varieties. In these genetics you are the direct beneficiary of Humboldt Seed Organization’s 25 years of research, development and experience.

GROWING TIPS

- Yields are dependent upon:
 - indoor or outdoor
 - time of year of planting (after last freeze)
 - annual weather conditions
 - location (lines of latitude and longitude)
 - size of pot or container
 - growing medium of use
 - diet and nutrition
 - preventative maintenance against pests and disease
- Nutrition: Whether cultivating indoors or outdoors it is recommended to use organic based soils and nutrients in your mixes. This helps to enhance and maximize terpene production resulting in a high-quality finished product. When using salt based mineral nutrients be sure to flush your plants with only water in the final weeks to reduce the amount of available nutrients and improve flavor and taste.
- Pest/Pathogens/Disease: Be proactive when managing your cultivation to minimize problems before they appear. When growing outdoors, companion planting and increasing biodiversity around cannabis can minimize issues. If there is risk of pest infestation, using predatory insects during flowering is recommended to avoid pesticide residue on plants.
- Outdoors, these plants can get BIG with HEAVY yields! Most times trellising is recommended. When grown larger, plants are recommended to be topped or “SCROG” methods applied. Plants can be topped multiple times to ensure more surface area which results in a higher yield.

Banana Sapphire

This fruitful combination brings together the powerful subtleties of the Banana OG with the acrid complexity of our unique and elite Sapphire OG. These two varieties have given birth to this phenomenal creation. This strain is not to be missing from any collection.

Flavor and Effects

Terpene profile expresses the beautiful fusion of strong acrid gas and black pepper followed by subtle fruity tropical flavors dominant in banana with sweet mango undertones. Banana Sapphire is known for its “creeper” effect often resulting in couch lock. Great for end of day use and pain relief. Experienced indica smokers may enjoy the very strong cerebral high.



Morphology

The original Banana OG came from a small Oregon community more than a decade ago. It was then crossed with our elite Sapphire OG known for its complex gassy terpene expressions. Plants maintain fast and vigorous growth throughout the life-cycle and do well in most conditions. Banana Sapphire enjoys lots of sun and can handle high temperatures and cold nights. Thin fan leaves allow for deeper light penetration and good spacing in between internodal development makes for good airflow in denser canopies. Large elongated buds form into large resinous colas during their final stages.

Cultivation Tips

Banana Sapphire is for all cultivation levels. Fast and vigorous vegetative growth is maintained through the complete life-cycle. These plants do well under trellising and have good spacing between fan leaves to allow for good light penetration, needing very little maintenance or cleaning. During flowering periods, trellising is recommended as large bud development in later stages needs to be supported. Cultivation indoors plants are low maintenance and will more than double in size during the flowering cycle. Strong feeding regimens are recommended.

Outdoor: Cages are recommended for larger plants. Secondary additional trellising will be needed for the later stages of flower development. Diet and nutrition should be stimulated throughout the cycle due to high metabolic function. Near harvest, leaves can yellow. Prefers dry climates with mountain sun, but does well in most environments.

75% Indica / 25% Sativa
23-26%+ THC, 0.1% CBD

Indoor Days: 60-63 days

Indoor Yield: 25-80g+ plant, 450g-500g m²

Outdoor Days: 1st/2nd week of October

Outdoor Yield: 5000g+ / 10 lbs per plant

Outdoor Height: 4.5m+ / 15ft+

3 pack
...
€38

5 pack
.....
€61

10 pack
.....
€110





Blueberry Headband

Blueberry Headband by Humboldt Seed Organization is a feminized Indica-dominant cannabis strain that boasts its pedigree. Blueberry Headband is a hybrid which blends potency, aroma, flavor, and high-yield perfectly. It yields plentiful crops with subtle fruity notes highly appreciated by the general public. This cannabis strain will tempt even the most demanding users thanks to its intense flavor and aroma, brimming with nuances of spices and aniseed. Its effect, a combination of cerebral and physical, is potent and long-lasting. This quality strain will please experts looking for high-potency seeds.



Flavor and Effects

This cannabis strain will tempt even the most demanding users thanks to its intense flavor and aroma, brimming with nuances of spices and aniseed. Its effect, a combination of cerebral and physical, is potent and long-lasting. This high-quality new strain will meet the expectations of those experts looking for seeds with high potency.

Morphology

A beautiful fusion of size and flavor. Vigorous veg growth, with sturdy infrastructure. Very resistant to pests and disease. Flowering sites end in large dense egg-shaped buds coated in resin. Outdoor harvests are in the beginning of October, with heights of 12ft. Indoors, 8 weeks to finish. High production value.

Cultivation Tips: Blueberry headband is easily cultivated by all skill levels. Fast and aggressive growth should be met with support of a trellis or staking prior to flowering. Plants will double in size during the flowering. Double trellising is recommended for indoor cultivation. Manicuring 30% of the undergrowth during the beginning stages of the flowering period help to maximize production.

Outdoor Cultivation: we recommended using hard metal cages for primary support when intending to grow large plants. 30-40% of the plant should be clean from the inside during the final stages of vegetating to make room for large developing bud sites. Plants can reach Heights of 4 to 5 m when grown in larger pots and support is necessary to maximize yield.

70% Indica / 30% Sativa

19-23%+ THC, 0.1% CBD

Indoor Days: 63-68 days

Indoor Yield: 450-600g+ m²

Outdoor Days: 1st/2nd week of October

Outdoor Yield: 1-4kg+ / 4.5-9lbs+ per plant

Outdoor Height: 3-4m+ / 9-13ft+

3 pack

...
€33.50

5 pack

.....
€52.50

10 pack

.....
€95.00

Chocolate Mint OG 2.0

Deriving from the cross of Emerald OG and Granddaddy Purple, the origins of Chocolate Mint OG v2 are pure and of great quality. It is an exceptional fast-flowering marijuana plant constantly radiating quality which is especially beautiful to observe during the flowering phase due to the purplish hues it takes on. The best part is its incredible yield, allowing for the production of generous crops of dense big buds with an intense scent. This cannabis hybrid has a very deep flavor and aroma, with hints of chocolate, mint, pine and spices, with an acid aftertaste. The effect provides long-lasting physical and cerebral sensations, and is so potent that inexperienced users should beware! For those in love with high-potency strains, this is a must-have.



Flavor and Effects

This cannabis hybrid has a very deep flavor and aroma, with hints of chocolate, mint, pine and spices, with an acid aftertaste. The effect, providing both physical and cerebral long-lasting sensations, is so potent that only the most experienced users ought to make use of it. This marijuana seed should be present in the collections of those in love with high-potency strains.

Morphology

Deriving from the cross of Emerald OG and Granddaddy Purple, the origins of Chocolate Mint OG 2.0 are pure and of great quality. It is an exceptional fast-flowering marijuana plant constantly radiating quality which is especially beautiful to observe during the flowering phase due to the purplish hues it takes on. Not particularly resistant to moisture, it is advisable to control its growth when growing indoors. Sybarites will fall for this Californian wonder from the very beginning. The icing on the cake is its incredible yield, allowing for the production of generous crops of dense big buds with an intense scent.

Cultivation Tips: Chocolate mint OG is grower friendly and built for most cultivation skill levels. Plants maintain vigorous growth through the vegetation period. Trellising is recommended to assist during the flowering phases, supporting large flowering sites. Plants typically double in size transitioning into flowering. Preventative measures should be used as this varietal has slight susceptibility to powdery mildew. **Outdoor Cultivation:** Contingent on the size of the pot and planting dates, plants will require extra support using metal cages and/or secondary layers of trellising. Plants are recommended to be hollowed out from the center allowing for continual airflow and minimizing problems in final stages of development. Topping or SCROG method is recommended to create even hormonal distribution, creating more homogeneous growth resulting in better yields.

80% Indica / 20% Sativa

22-26% THC

Indoor Days: 55-65 days

Indoor Yield: 400-600g+ m²

Outdoor Days: Early October

Outdoor Yield: 1-2kg+ / 2-5lbs+ per plant

Outdoor Height: 3m / 10ft

3 pack

...
€33.50

5 pack

.....
€52.50

10 pack

.....
€95.00





Cinnamon Buddha OG

Preserving genetics can be a difficult task but some are so valued within the cannabis community they have descended from one loving hand to another in secrecy and quiet anonymity for decades. Cinnamon Buddha OG was born and preserved from this legacy. The "Florida Cut" OG aka "The Triangle" crossed with our original and uncirculated Fire OG, created this pungent gem. This timeless strain is one to be cycled into your space now as well as preserved for future generations. This award winning flavor and taste is not to be missed by any refined palate.



Flavor and Effects

Notes of spicy cinnamon, pine, nutmeg and lemon pepper with earthy rich citric undertones. Strong body effects followed by long lasting relaxing and calming sensations. Great for end of day use and pain relief. Excellent for sleeping.

Morphology

With the classic OG build and structure this plant reflects the essence of what so many have craved for more than two decades. Thinner fan leaves with a lanky build set the stage for fist size buds with beautiful purple hues backed by a pungent taste of another caliber. Plants will need support in later stages to ensure they reach their maximum potential. They are worth the additional maintenance and care.

Cultivation Tips

Classic OG structure and development are evident through the primary developmental stages. Long spacing between internode sites accompanied by thinner fan leaves make for explosive growth transitioning into flowering. Plants will more than double in size headed into the flowering period and should be assisted with double layer trellising indoors. "SCROG" techniques are ideal as well as "sea of green" methods due to the abundant light penetration into the second layers of canopy. Bud development has substance to the bottom of the stem and should be left as secondary and third layers of canopy have a tendency to maintain density and contribute weight to the end result. Stronger feeding regimens during flowering cycles will maximize yield. A modest consumer of nitrogen, this strain is genetically inclined to finish densely. Good leaf to calyx ratio will make for a quick and easy trim with fantastic bag appeal.

85% Indica / 15% Sativa

21-24%+ THC, 0.1% CBD

Indoor Days: 63 days

Indoor Yield: 400g-450g m²

Outdoor Days: 1st/2nd week of October

Outdoor Yield: 4000g+ / 6-8 lbs per plant

Outdoor Height: 4.5m / 15ft

3 pack

...
€33.50

5 pack

.....
€52.50

10 pack

.....
€95.00

Florida Gaspack

The mysterious arrival of the Chemdawg series left many connoisseurs desiring these elusive phenotypes for decades. Though the origins of lineage remain unknown, the impact they've had on the cannabis industry is undeniable. This cross between a Chem '95 and the infamous Florida OG aka "Triangle OG" cut resulted in a greasy, chemical scented masterpiece. This legendary variety maintains the exquisite potency sought by many for more than 25 years. These flavors shaped the modern day hybrid movement and are by far some of the most desired the cannabis world has to offer. With amazing bag appeal and extreme potency this strain is an ideal addition for collectors and connoisseurs alike.



Flavor and Effects

Sharp aromas of gassy acetone and chemical cleaning products dominate the foreground while citrus and peppery pine accompany lemongrass and mint undertones. Initial cerebral effects are followed by strong couch lock. Ideal for end of day use. Great for unwinding and relaxing without too much to do. Great for sleep and pain relief.

Morphology

Florida Gaspack grows fast and hardy during its early stages of development. More than doubling in size transitioning into the flowering period, take notice to stay ahead of the curve to meet the demands of this metabolic monster. Long "castle" like tops with a wet and greasy appearance present an unmistakable look. Great leaf to calyx ratios, leaving a lot more flower to green material, favorable to any grower.

Cultivation Tips

Florida Gaspack meets a broad range of cultivation skill sets. Fast and vigorous growth lead to tall and lanky plants early on. It's important to top plants throughout the course of their life if you do not plan on flowering quickly. They are ideal for the "sea of green" or "SCROG" methods due to the plant's deeper light penetration from thin sativa like fan leaves and longer spacing between internodes. Double Trellising is recommended for indoor cultivation. Undergrowth should be clean and energy focused on primary terminal sites to maximize yield potential. The plant is ideal for making extraction if you decide to leave excess layers underneath the primary canopy. Outdoor plants should be caged and secondary trellis should be applied to assist in final stages of development. Plants are best hollowed out to allow for maximum amount of airflow. This variety is slightly susceptible to powdery mildew and preventative measures should be taken accordingly. Feeding regimens are more demanding during the flowering cycle. Nitrogen consumption is modest though it is recommended to increase levels of calcium to support density in final stages. We recommend adding bone meal to your recipe in the first week of flowering and sequentially every three weeks until mid cycle as we have experienced this to create some of the best results.

75% Indica / 25% Sativa

24-26%+ THC, 0.1% CBD

Indoor Days: 60-63 days

Indoor Yield: 400-450g+ m²

Outdoor Days: Early-Mid October

Outdoor Yield: 4kg+ / 6-8lbs+ per plant

Outdoor Height: 4.5m+ / 15ft+

3 pack

...
€33.50

5 pack

.....
€52.50

10 pack

.....
€95.00





Ghost of NYC

Modern day hybrids were built on classic varieties appearing in the late 90's to early 2000's. The Iconic East Coast Sour Diesel was one of the most notorious and high priced varieties for more than two decades. It has given rise to some of the most desired terpene profiles in the market today. The cross between an elite and uncirculated New York City Sour Diesel blended with our elite selection and uncirculated 4-way OG resulted in this dynamite and potent creation. As many heirlooms begin to disappear, this timeless flavor shouldn't be missed.



Flavor and Effects

Terpene profile is known for its unmistakable gassy and citric overtones followed by sweet yet acidic notes of pine and lemon grass. Great for daytime use and outdoor activities. The calming and long lasting effect can still create an energizing feeling when consumed in moderation. Excellent for creative thinking and stimulating activities both mental and physical.

Morphology

From inception the Ghost of NYC grows with great strength and vigor. It appears more sativa in development though the plant still retains indica dominant effects. Large spacing between internodes are expressed through early stages of development. Elongated and large flowering sites develop in later stages finishing with beautiful lime green tones, contrasted by glossy resin covered buds. A happy plant in most environments, the Ghost of NYC flourishes with strong sun conditions.

Cultivation Tips

Ghost of NYC develops quickly and does best underneath trellising. Ideal for "sea of green" methods. While transitioning into the flowering cycle, plants will more than double in size needing very little time for vegetative growth prior to flowering. When grown larger, plants are recommended to be topped or "SCROG" methods applied. Strong feeding regimens are recommended as these girls will be more demanding not only nitrogen but also higher levels of calcium. (Bone Meal specifically is ideal during the first weeks of flowering and periodically throughout the cycle, ensuring more bud density. Plants outdoors are highly recommended to be caged and secondary layers of trellis are necessary for later stages of development to support large bud sites. Cleaning the inner layers of canopy prior to the flowering period and again during the 2nd-3rd week are crucial to maximizing yield, though the plant does receive better light penetration due to the thinner fan leaves and good spacing between bud sites. Ghost of NYC does great in cold and wet conditions close to harvest and really packs on the weight during the last couple weeks while showcasing bountiful resin. These plants are great for extraction with secondary and third layers of canopy.

70% Indica / 30% Sativa

24-26% THC, 0.1% CBD

Indoor Days: 63-65 days

Indoor Yield: 400-450g+ m²

Outdoor Days: Mid October

Outdoor Yield: 4kg+ / 6-8lbs+ per plant

Outdoor Height: 4.5m+ / 15ft+

3 pack

...
€33.50

5 pack

.....
€52.50

10 pack

.....
€95.00

Green Crack 2.0

Our very own Green Crack is a Sativa-dominant feminized cannabis strain conceived for cannabis connoisseurs. If you buy Green Crack Seeds, you will discover a rounded, stable, high-yielding, fruity plant that grows incredibly fast. Green Crack is a cannabis seed of distant origins that comes from a 1989 SSSC Skunk#1 and an isolated Afghani cut. The result is a beautiful marijuana plant that grows vigorously and boasts amazing stability.



Flavor and Effects

Green Crack is a cannabis hybrid with an aroma of exotic fruit and a flavor of citrus fruit, mango, pineapple, cedar and incense. It provides a pleasant, powerful, long-lasting, cerebral, invigorating, euphoric effect that true Skunk lovers will definitely love.

Morphology

Its structure, reminiscent of a Christmas tree, is home to an impressive amount of buds. Resistant to mold and pests, it requires a short growing period indoors and responds best to dry, warm, sunny, temperate and Mediterranean climates outdoors.

Cultivation Tips

Green Crack has been created for all skill levels. This classic sweet skunk displays rapid growth with a sativa dominant expression. Long spaces in between internodes make for quick flips into the flowering stage. Plants will double in size during this transitional period. Trellising is recommended for the final stages of development. Preventative measures should be taken as this plant does have slight susceptibilities to mold and mildew.

Outdoor Cultivation is known for massive production. Vegetative periods move quickly and require double layer support from both a hard metal cage and soft net trellising. Plants are recommended to be topped multiple times in order to create more even growth. Plants can reach height of 5 m and are typically done by the end of September to the first week of October. Very consistent and stable with an amazing production value.

60% Sativa / 40% Indica

18%+ THC, 0.1% CBD

Indoor Days: 60-65 days

Indoor Yield: 400-600g+ m²

Outdoor Days: Early October

Outdoor Yield: 1-3kg / 2-7lbs per plant

Outdoor Height: 1-3m / 4-10ft

3 pack

...
€33.50

5 pack

.....
€52.50

10 pack

.....
€95.00





Lemon Citron

Lemon Citron is a strain composed through the fusion of two highly demanded varieties known for their sharp gassy and citrus terpene profiles. The infamous Lemon Tree was pollinated with our elite selected four-way OG. The combination resulted in the large elongated castle like buds, glossy with resin with an incredibly pungent finish. With eye popping bag appeal and unforgettable flavor this strain is a sure winner and should be included in all connoisseur lineups.



Flavor and Effects

Pungent, eye-watering, gassy flavor dominates the foreground with notes of citrus and sweet fruit underneath. Some might say it conjures spicy lemon pepper and hints of acetone. Calming, relaxing and long lasting due to the small percentage of sativa but can have a creeper effect if consumed in larger quantities. Good for mid-day use. Great for outdoor activities.

Morphology

Lemon tree is a Super Skunk and California Sour Diesel. Sativa dominant, this clone is more resistant to disease and able to handle humid climates (performs well in most climates). The four-way OG traits are known for their big bulbous bud formations accompanied by high resin output with great bag appeal.

Cultivation Tips

Once germinated the Lemon Citron grows with great vigor and strength. Its high metabolic function will need higher nutritional regimens, especially supplemental means of nitrogen (preferably organic). This is important throughout all stages of development. Plants will do well in most climatic environments and can handle higher levels of humidity. The Lemon Citron loves lots of sun. Good spacing between internodes allows for better airflow and deeper light penetration into the canopy. Plants will more than double in size indoors transitioning into the flowering period. Large bud sets should be supported at least by a single layer if not a secondary layer of trellis.

Outdoor: For larger plants, cages and secondary layers of trellising are recommended. Topping throughout the course of the plant's life will create more terminal sites as plants can still reach heights of more than 4.5m (15ft). Topping can be done every two weeks and at least 3 to 6 times throughout the course of the plant's life cycle leaving a few weeks prior for recuperation before the final transition into flowering.

70% Indica / 30% Sativa

24-26%+ THC, 0.1% CBD

Indoor Days: 65 days

Indoor Yield: 400-450g+ m²

Outdoor Days: Mid October

Outdoor Yield: 4kg+ / 8lbs+ per plant

Outdoor Height: 4.5m+ / 15ft+

3 pack

...
€33.50

5 pack

.....
€52.50

10 pack

.....
€95.00



Sapphire OG

Modern Hybrids were built on the foundation of greatness.

This creation reigns supreme for its unmistakable AAA aromas backed by incredible potency. Sapphire OG has become one of our most desired and iconic flavors in the Humboldt Seed Organization lineup. The infamous "Florida cut" OG crossed with our OG Afghan provides a unique and exciting strain for all growers to admire and enjoy. If tended to correctly this plant far exceeds expectations and should be added to every modern library.



Flavor and Effects

Strong essence of complex pine and gas overtones followed by sharp notes of cinnamon and spice accompanied by subtle notes of chocolate and nutmeg. A strong cerebral high and ideal for end of day use. Experienced users will enjoy the mentally relaxing yet stimulating aspect while still being great for creativity and mellow enjoyment.

Morphology

Aggressive and healthy growth mark the early stages of the Sapphire OG. Needs little maintenance during beginning stages. Modest feeding regimens make it ideal for a broad range of cultivation skill sets. Tall and lanky in nature from its OG dominant parentage, makes for good spacing between internodes and deeper light penetration into the canopy. Beautiful multicolor buds with shades of purple and green showcase glossy resin covered tops, while smaller golf ball size buds develop in secondary and third layers of canopy.

Cultivation Tips

Plants can be cultivated with modest diets and nutritional regimens. Ideal for "sea of green" and does incredibly well in thick canopy scenarios due to better light penetration from thin fan leaves. Plants will more than double in size from the vegetative to flowering period and it is critical to use trellising, preferably two layers to support for development in later stages. For indoor cultivation, plants can be densely arranged. They have the capacity to take a strong feeding throughout the duration of the life cycle. Second and third layers of canopy form dense buds during the final stages of flowering and have substantial production value.

Outdoor: Plants are recommended to have cages when grown for long term full sun cycles. Second layers of trellising are highly recommended. Cleaning or hollowing the inside of the plants to allow for more airflow is critical prior to major bud growth and is highly recommended to be addressed during the first couple weeks of flowering to focus development on terminal bud sites. Plants should be topped multiple times to ensure more surface area which results in a higher yield. Plants are slightly susceptible to powdery mildew as preventative measures should be applied accordingly.

85% Indica / 15% Sativa

21-24%+ THC, 0.1% CBD

Indoor Days: 57-60 days

Indoor Yield: 400-600g+ m²

Outdoor Days: Late Sept/Early October

Outdoor Yield: 4kg / 6-8lbs+ per plant

Outdoor Height: 3-4m+ / 12-15ft+

3 pack

...
€33.50

5 pack

.....
€52.50

10 pack

.....
€95.00





FAST FLOWERING SEEDS

“Fast” or “Quick” cannabis seeds by Humboldt Seeds are photo-dependent strains with a fast flowering phase, which means they flower between 1 - 2 weeks faster than the standard versions. Humboldt Seeds’ Fast genetics have been created from the cross of their classic strains with their best autoflowering varieties. Fast strains are ideal for impatient growers eager to obtain quicker harvests, as well as for growers in northern areas with adverse weather conditions. Fast strains are perfect for anyone wishing to grow our classic Humboldt genetics while retaining all their top qualities — and finish in mid-September!

White Runtz (fast) growing outdoors



70% Indica / 20% Ruderalis / 10% Sativa
19-21%+ THC, 0.1% CBD
 Indoor Days: 53-55 days
 Indoor Yield: 450g-500g m²
 Outdoor Days: End of September
 Outdoor Yield: 1kg / 1-2lbs per plant
 Outdoor Height: 2-2.5m+ or 6-8ft+

Ice Cream Cake (Fast)

This underground cult classic bred by the infamous Seed Junkie from Los Angeles took the industry by storm over the last few years. These unique genetics express the essence of what so many consumers pursue in the realms of flavor and taste. From high-quality extractions to premium slow cured flowers, this variety has found itself in thousands of cannabis dispensaries across the world in all shapes and forms.

Flavor and Effects

Sweet candy essence with touches of cinnamon and spicy pepper. Rich hashy aromas and flavors followed by sweet and complex gassy notes. Great for daytime use and outdoor activities. Excellent for creativity such as art and music as well as assisting mild pain relief. Great for functional use.

3 pack
 ...
€35

5 pack

€54

10 pack

€98



70% Indica / 20% Ruderalis / 10% Sativa
18-21%+ THC, 0.1% CBD
 Indoor Days: 48-53 days
 Indoor Yield: 400g-450g m²
 Outdoor Days: Middle to end of September
 Outdoor Yield: 1kg / 1-2lbs per plant
 Outdoor Height: 2-2.5m+ or 6-8ft+

Peanut Butter Breath (Fast)

This phenomenal strain appeared not too long ago, becoming an instant classic. The underground scene had spoken and this creation was a definite winner and has gone full mainstream. The Peanut Butter Breath is the beautiful combination of Dosi-Do (Cookies x OG Kush) and Mendo Breath (OGKB x Mendo Montage) making for a gassy and sweet pastry-like finish. With an unforgettable glossy deep purple shimmer while bag appeal is undeniable. It has been showcased across dispensaries across the country and acclaimed for its edgy terpene profile. A sure winner for anyone chasing delightful flavor.

Flavor and Effects

Nutmeg and cinnamon cookie with strong earthy notes. Great for daytime use and outdoor activities. Long lasting mild body sensations.

3 pack
 ...
€35

5 pack

€54

10 pack

€98





Runtz (Fast)

A few varieties have arrived at iconic status in the last handful of years. The inevitable cross between the Gelato and Zkittles was born. The Runtz has stormed onto the scene capturing the attention of connoisseur's palettes ever since its conception. High market prices in the past were driven by immense demand to have a taste of this unique terpene profile. We have now brought it to you in a faster and more versatile form.

Flavor and Effects

Strong notes of spicy black pepper with sharp gassy aromas accompany an unmistakable essence of sweet and sour candy with earthy pine undertones. Great for daytime use and daytime activities. Excellent for creativity as well as mild pain relief. Great for functional use.

70% Indica / 20% Ruderalis / 10% Sativa
18-21%+ THC, 0.1% CBD

Indoor Days: 50-53 days

Indoor Yield: 400g-450g m²

Outdoor Days: End of September

Outdoor Yield: 1kg / 1-2lbs per plant

Outdoor Height: 2-2.5m+ or 6-8ft+

3 pack

...
€35

5 pack

.....
€54

10 pack

.....
€98



White Runtz (Fast)

Multiple phenotype selections are common when you cross top quality genetics. The White Runtz is a perfect example, stemming from the infamous Runtz lineage. This phenotype was selected for its large yield, vigorous growth and overall low maintenance characteristics. These genetics combined with our uncirculated elite OG auto to shorten the flowering cycle and become a top performer.

Flavor and Effects

Sweet candy cane with spicy pine and sour citrus overtones. Deep and complex sharp gassy and black pepper undertones and aromas. Great for daytime use and outdoor activities, as well as mild pain relief. Great for functional use. Long lasting mild body sensations.

70% Indica / 20% Ruderalis / 10% Sativa
19-21%+ THC, 0.1% CBD

Indoor Days: 50-55 days

Indoor Yield: 450g-500g m²

Outdoor Days: End of September

Outdoor Yield: 1kg / 1-2lbs per plant

Outdoor Height: 2-2.5m+ or 6-8ft+

3 pack

...
€35

5 pack

.....
€54

10 pack

.....
€98



CBD SEEDS

Breeding boutique and commercially viable strains to meet the diverse needs of CBD farmers, HSO is advancing the creation of stable, high quality, lawfully compliant genetics via science-based research and development. With decades of industry experience, Humboldt is expanding the boundaries of what is possible in the CBD realm. Our state of the art low THC, CBD rich strains are great for making oils, salves, balms, tinctures and other applications.

These strains bring together the best traits of our Californian genetics and all the benefits of CBD. We are the breeders choice.



75% Sativa / 25% Indica
14% CBD, 0.6% THC
Indoor Days: 78+ days
Indoor Yield: 25-75g per plant
Outdoor Days: 78-90 days
Outdoor Yield: 45-150g per plant

Amnesia CBD Pure Auto

Amnesia Auto CBD Pure is a feminized autoflowering and CBD-rich cannabis seed derived from the cross of an Amnesia Autoflowering and an Auto CBD. 75-days from germination to harvest, plants can flower under mid-summer light conditions, allowing the farmer to shape their cultivation and harvest schedules. With amazing Amnesia taste this HSO original is great for experts and newbies alike.

3 pack
...
€34

5 pack
.....
€53

10 pack
.....
€95



75% Indica / 25% Sativa
17% CBD, 0.6% THC
Indoor Days: 63+ days
Indoor Yield: 450g-500g m²
Outdoor Days: 1st week of October
Outdoor Yield: 1-4kg per plant

Sapphire Bubba CBD Pure

This elite selection of our Sapphire Bubba CBD provides a delicious terpene profile with vigorous growth and production. Plants can be cultivated by most skill levels and they perform well in most environmental conditions. A gentle and mellow long lasting effect and great for day time use. Truly a champion pedigree.

3 pack
...
€34

5 pack
.....
€53

10 pack
.....
€95



75% Sativa / 25% Indica
6% CBD, 0.3% THC
Indoor Days: 65+ days
Indoor Yield: 450g-500g m²
Outdoor Days: Mid October
Outdoor Yield: 1-4kg per plant

Sapphire Lime CBD

Magic happens when Bubba Kush CBD is crossed with our Key Lime CBD. Delight in sweet citrus notes with gassy undertones. Great production value backed by incredible vigor — finishing in just 9 short weeks! Another classic terpene profile build for consumers looking for a mild psychoactive effect.

3 pack
...
€34

5 pack
.....
€53

10 pack
.....
€95

Humboldt Seed Organization



ABOUT HSO

Humboldt Seed Organization is a collective of breeders with more than 25 years in the cannabis industry. Purveyors of elite genetics for more than two decades, our meticulous selections are applied using science, technology, and years of experience in the field and in the grow room. HSO is constantly innovating and expanding our genetic library to bring new and exciting stable high quality cannabis varieties to small farmers and commercial producers alike.

HSO is distributed in over 25 countries and over 2,000 shops across the globe in over a 8 languages. For over a decade, Humboldt Seed Organization has become an industry leader in the creation of high-quality premium U.S. cannabis genetics in the international marketplace.

Rooted in the ideology of regenerative agriculture, our core values reflect preservation of all living things by maintaining ultimate respect for the natural world. We highly encourage organic cultivation techniques using sustainable methods designed for closed loop concepts which minimize unnecessary inputs in order to achieve great results.

From small home cultivations to boutique mom and pop farms to large scale commercial production, Humboldt Seed Organization is committed to providing the highest quality stable cannabis genetics the industry has to offer.

VISIT US ON THE ROAD!

Visit <https://www.humboldtseeds.at/expos>
to see where we'll be landing next!

VISIT US ONLINE:
humboldtseeds.org

